



RAHEJA
GALAXY
— NIBM ROAD —



Artist's impression

LIVING A LIFE OF LUXURY STARTS WITH REACHING FOR THE STARS.

The most eagerly anticipated address in South Pune is all set to sprinkle some stardust. Get ready to discover Raheja Galaxy off NIBM, brought to you by K Raheja Corp Homes. This luxury residential enclave offers 2 & 3 bedroom homes that provide the perfect blend of opulence, exclusivity and refined elegance. Created to appeal to connoisseurs of sophistication and excellence, the amenities, design and comforts at Raheja Galaxy are redefining the standards of luxury in the neighbourhood. Welcome to a landmark where neo-classic design meets contemporary indulgences, location meets convenience and your lifestyle shines brighter than the stars.

LOCATION MAP



The details mentioned above are based on information available through Google Maps. The existence/continuity of existence of any landmark/s shown above are subject to change (as per plans finalized by the concerned authorities) and such changes are completely outside the control of the Promoter/Developer. Promoter/Developer makes no representation regarding existence/continuity of existence of any locations/landmarks shown above.

TOWER 2 - PLANS



TOWER 2 | TYPICAL FLOOR PLAN

Floor Level: (2nd, 3rd, 4th, 6th, 7th, 8th, 9th, 11th, 12th, 13th, 14th, 16th, 17th, 18th, 19th, 21th, 22th, 23th, 24th, 26th)



FOREST FACING

CENTRAL LANDSCAPE FACING

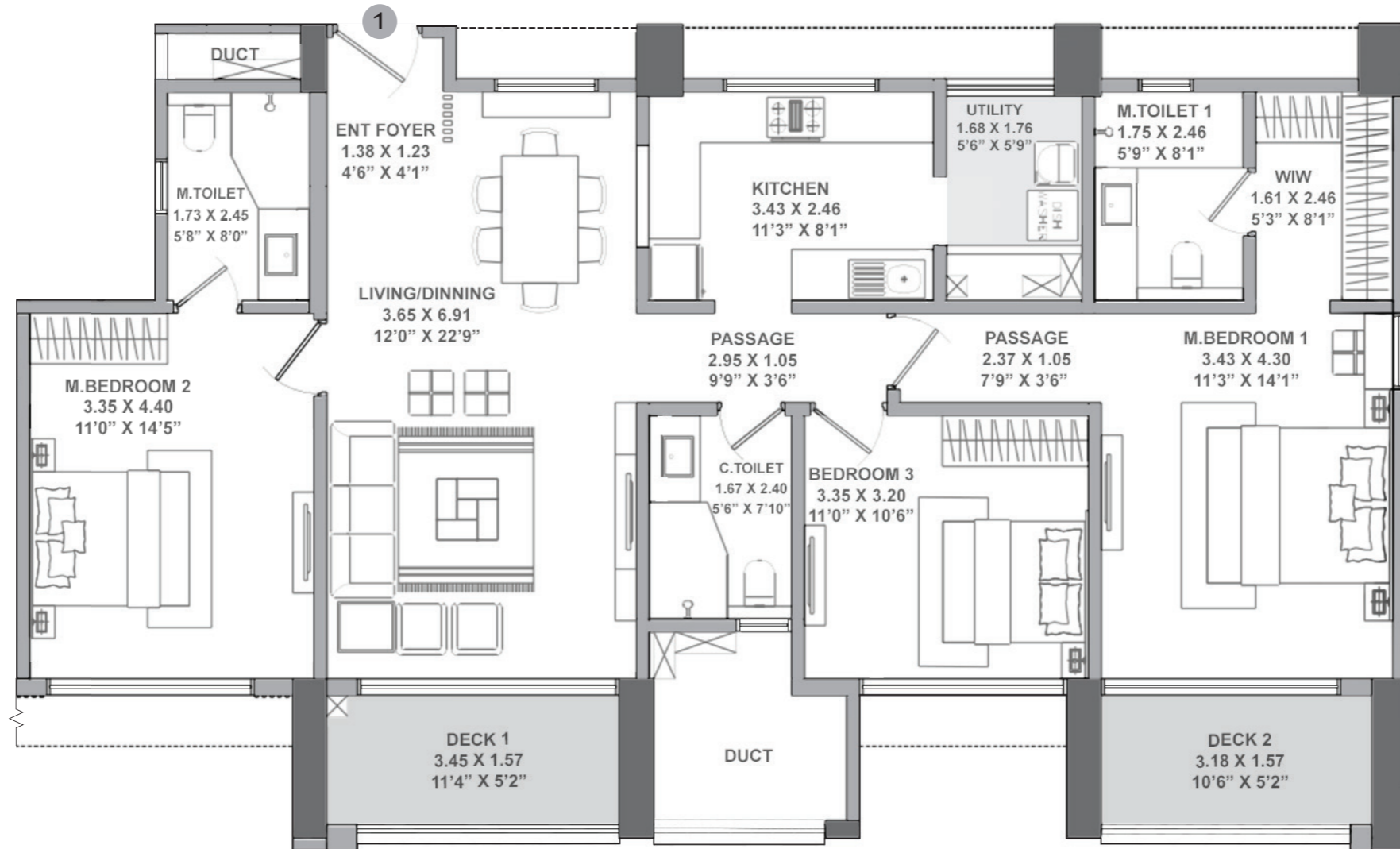


TOWER 2 KEY PLAN



Note - T2 named "Constella" and T3 named "Altair" of Raheja Galaxy in RV Premiere ("Project") is being developed by the Promoter- Cavalcade Properties Private Limited (a K. Raheja Corp group co.) and is registered with MahaRERA under Registration Nos.: P52100054218 and P52100054163 respectively, the details whereof are available on the website <https://maharera.mahaonline.gov.in/> under registered projects. The dimensions mentioned on the floor plans are as per the plans presently approved by the PMC (the Promoter reserves the right to vary the same in accordance with applicable laws, subject to final approval of the PMC). The furniture and features depicted on the typical floor plans (save and except fittings and features as may be agreed to be provided) are not part of the standard offering and are purely illustrative. List of standard offerings and other details are available for verification at site. Details of the specifications of the building/flats, standard offerings, amenities, and facilities are available at site for verification. Intending purchasers are requested to verify all details before acting in any manner with respect to the Project.

TOWER 2 | UNIT 1 - 3 BHK

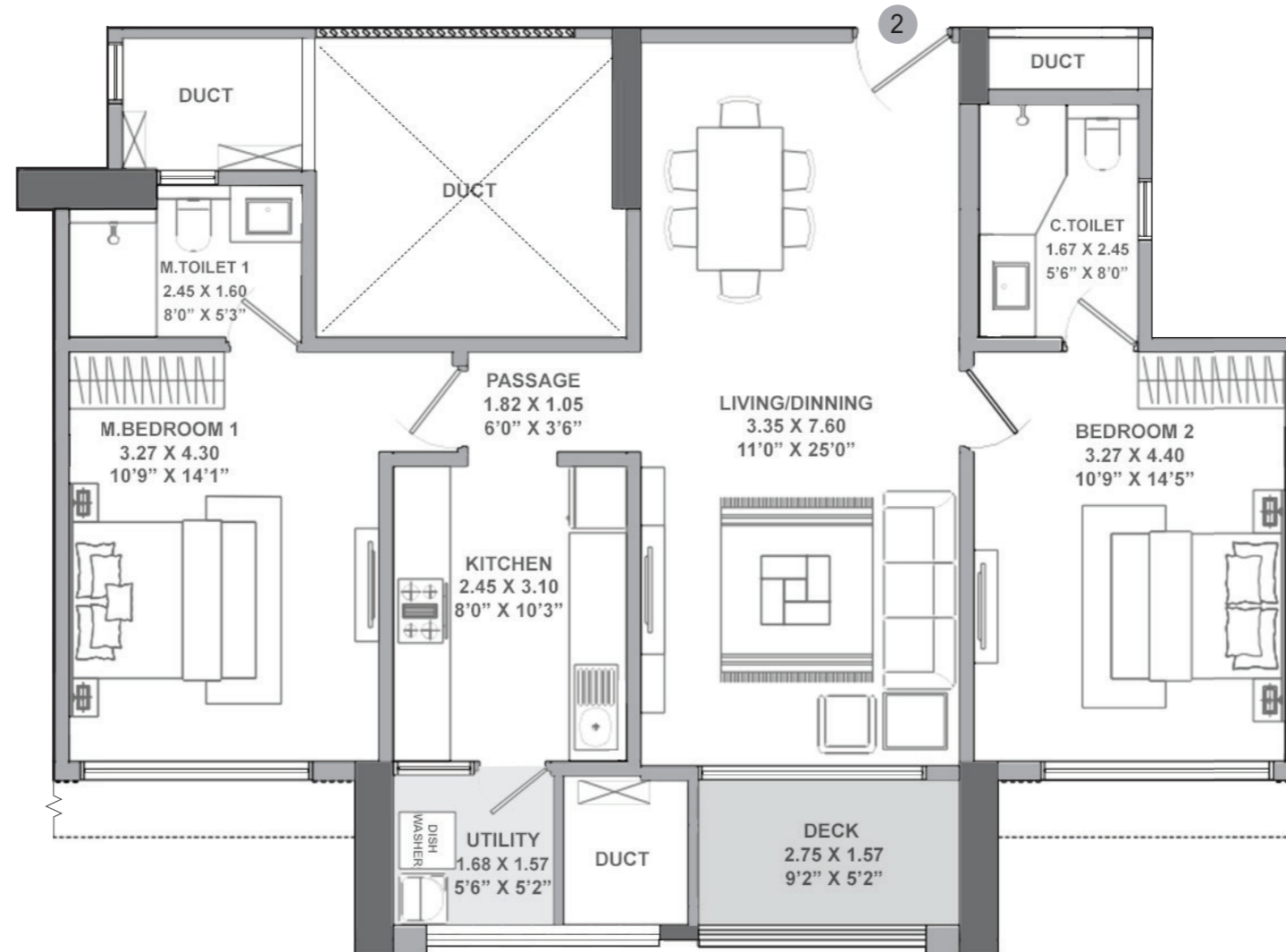


TOWER 2 KEY PLAN

RERA CARPET AREA	BALCONY AREA	TOTAL AREA
106.64 SQ.MT.	10.32 SQ.MT.	116.96 SQ.MT.
1147.86 SQ.FT.	111.08 SQ.FT.	1258.94 SQ.FT.



TOWER 2 | UNIT 2 - 2 BHK

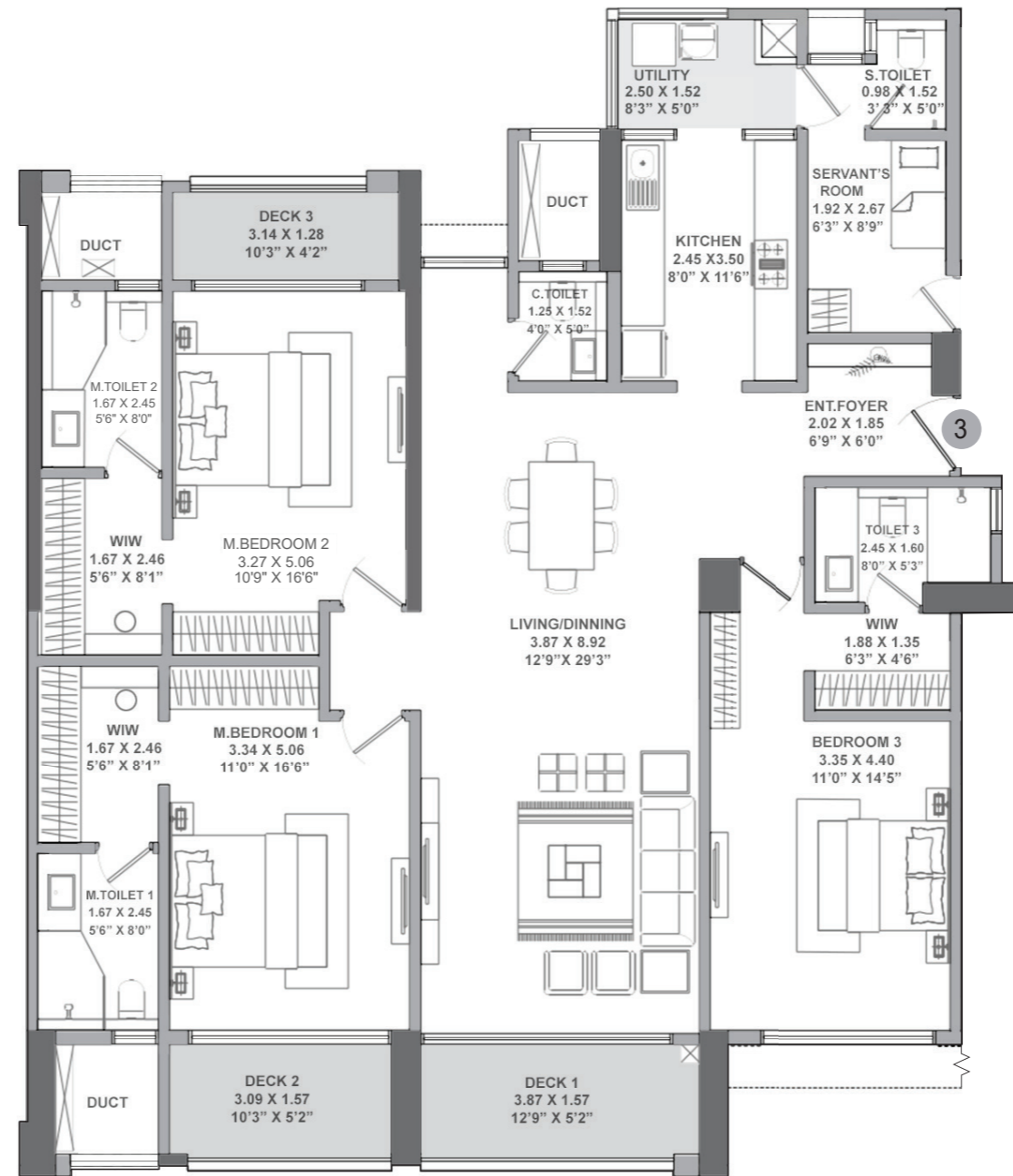


TOWER 2 KEY PLAN

RERA CARPET AREA	BALCONY AREA	TOTAL AREA
78.94 SQ.MT.	4.33 SQ.MT.	83.27 SQ.MT.
849.7 SQ.FT.	46.6 SQ.FT.	896.3 SQ.FT.



TOWER 2 | UNIT 3 - 3 BHK L

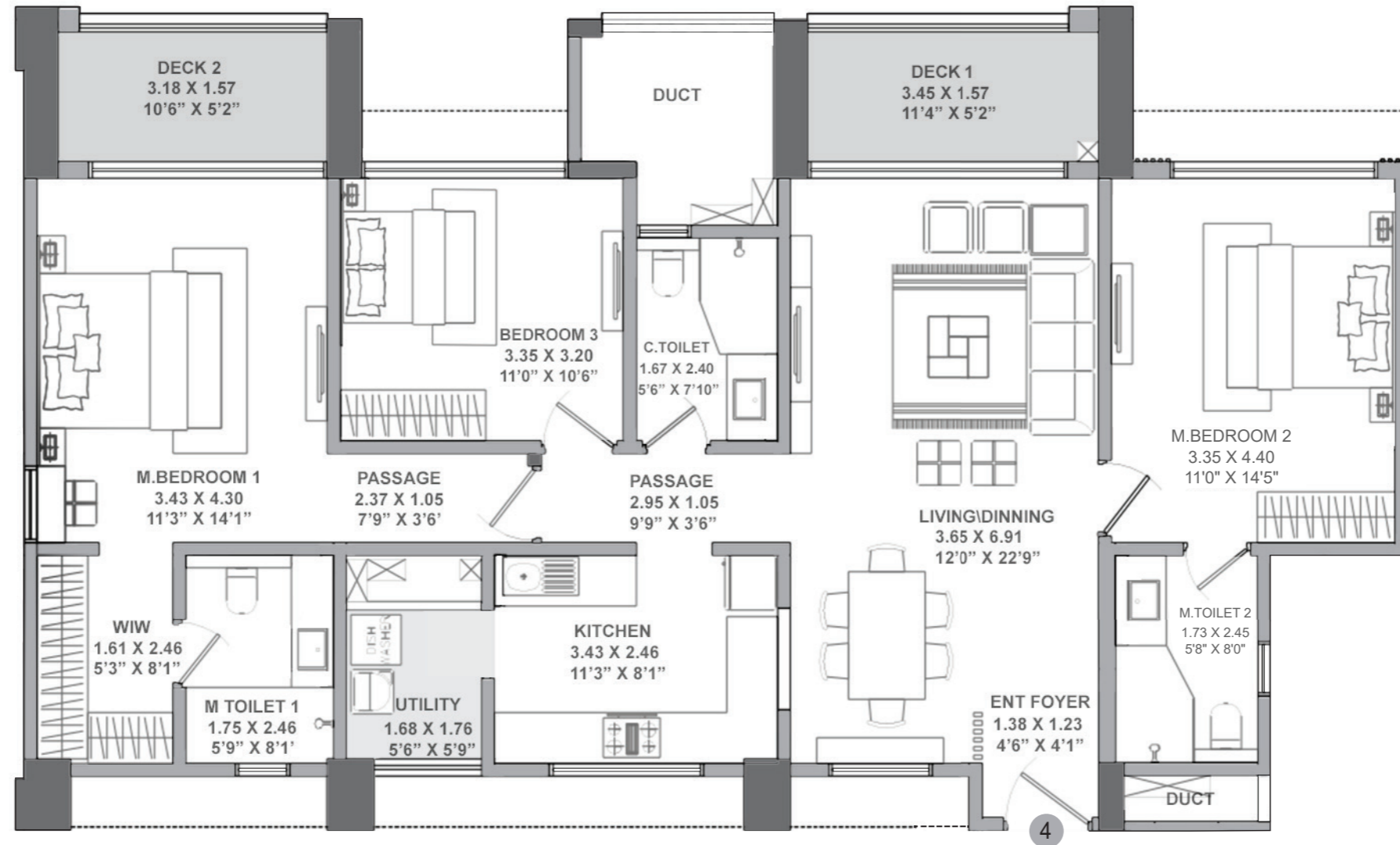


TOWER 2 KEY PLAN

RERA CARPET AREA	BALCONY AREA	TOTAL AREA
150.03 SQ.MT.	15.53 SQ.MT.	165.56 SQ.MT.
1614.9 SQ.FT.	167.16 SQ.FT.	1782.06 SQ.FT.



TOWER 2 | UNIT 4 - 3 BHK

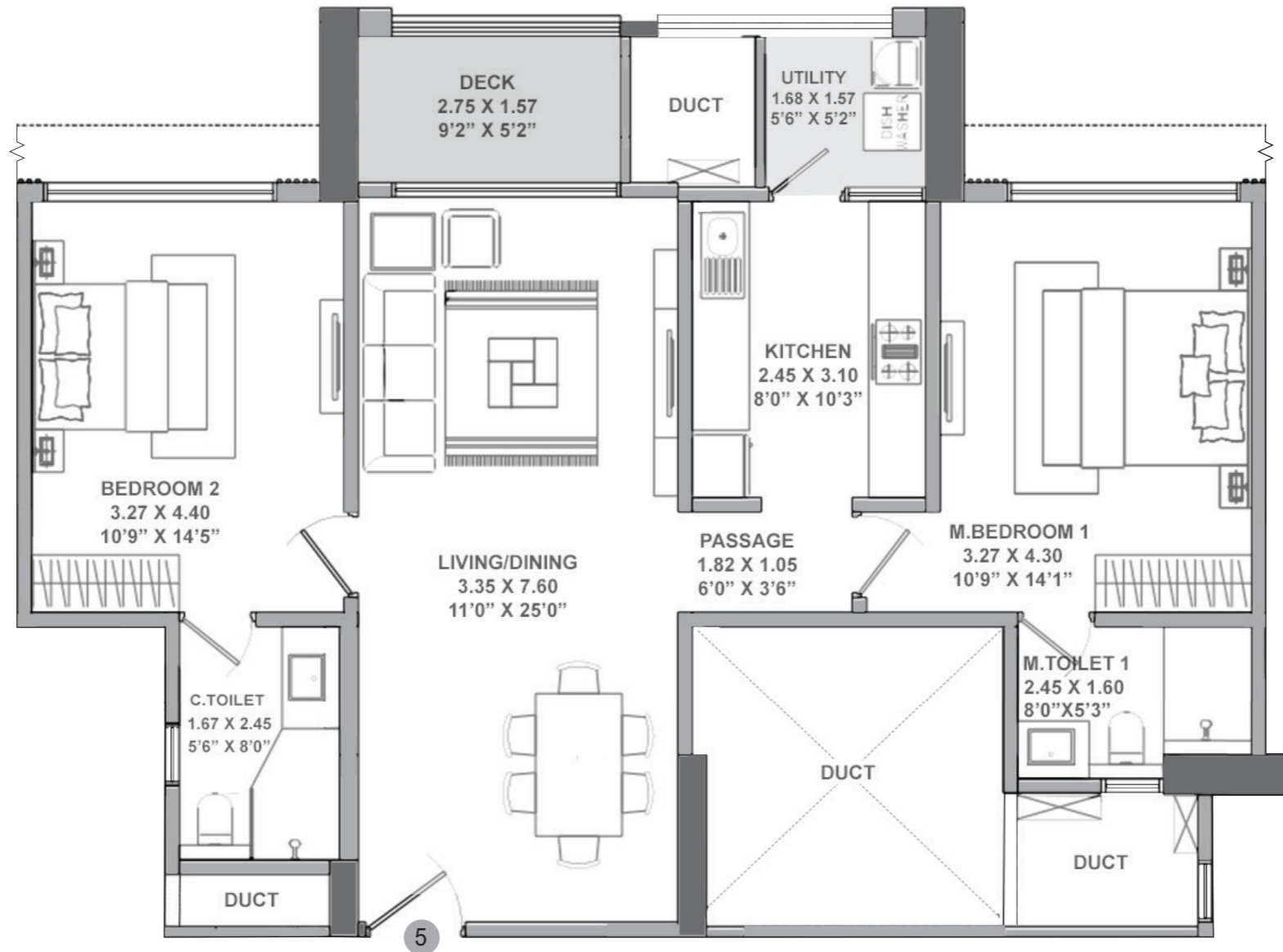


TOWER 2 KEY PLAN

RERA CARPET AREA	BALCONY AREA	TOTAL AREA
106.64 SQ.MT.	10.32 SQ.MT.	116.96 SQ.MT.
1147.86 SQ.FT.	111.08 SQ.FT.	1258.94 SQ.FT.



TOWER 2 | UNIT 5 - 2 BHK

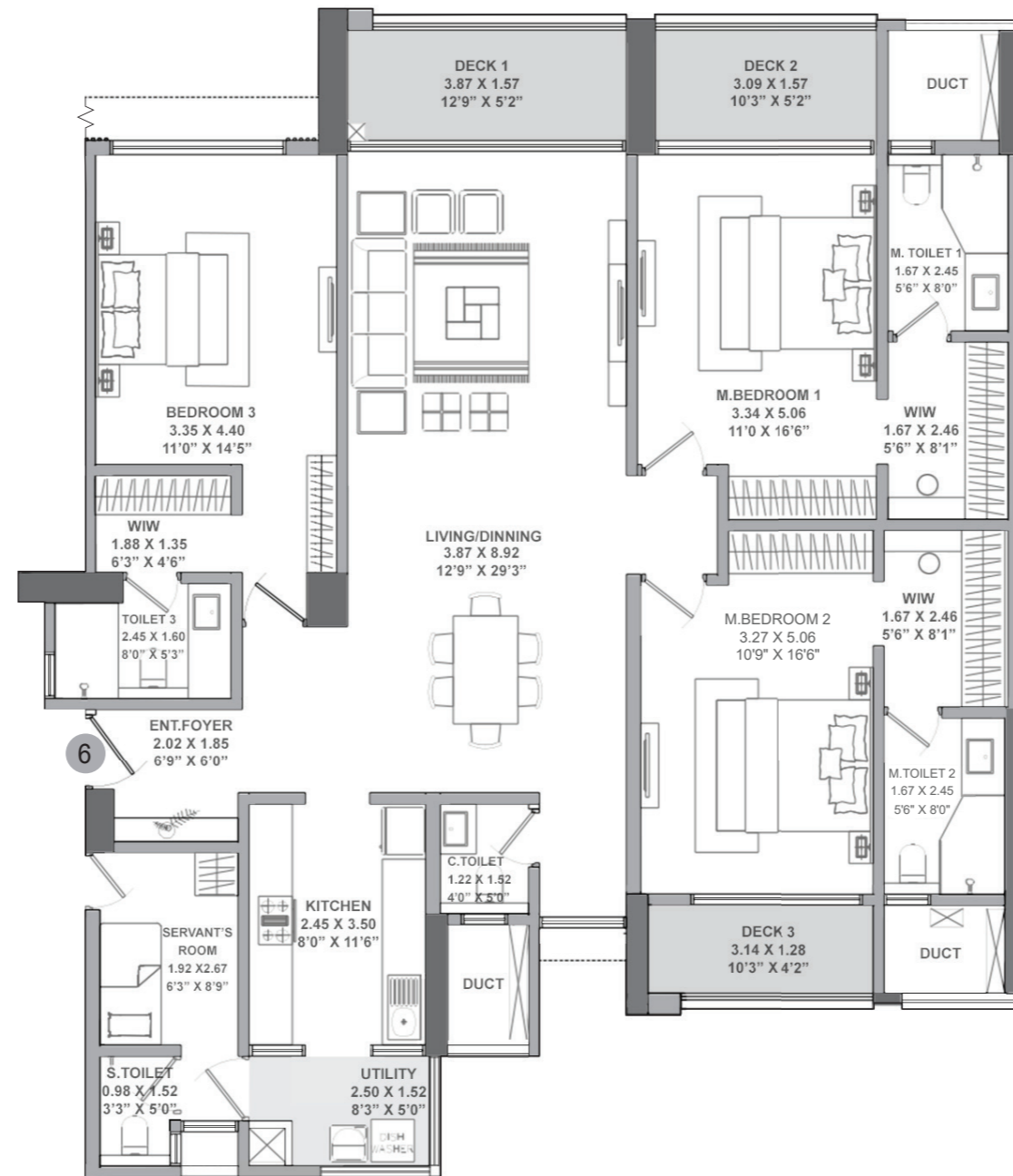


TOWER 2 KEY PLAN

RERA CARPET AREA	BALCONY AREA	TOTAL AREA
78.94 SQ.MT.	4.33 SQ.MT.	83.27 SQ.MT.
849.7 SQ.FT.	46.6 SQ.FT.	896.3 SQ.FT.



TOWER 2 | UNIT 6 - 3 BHK L



TOWER 2 KEY PLAN

RERA CARPET AREA	BALCONY AREA	TOTAL AREA
150.03 SQ.MT.	15.53 SQ.MT.	165.56 SQ.MT.
1614.9 SQ.FT.	167.16 SQ.FT.	1782.06 SQ.FT.





Promoter/Developer Cavalcade Properties Private Limited (a. K. Raheja Corp group co.)

Site Address: Sales Gallery, Raheja Galaxy, Near Royal Heritage Mall-Dorabjee's Paradise, Off NIBM, Pune - 411060
Head Office: Raheja Tower, Opp SIDBI, Block G, Plot No. C - 30, Bandra Kurla Complex Road, Bandra (E), Mumbai - 400051

☎ 8080 445 445 | ✉ sales@kraheja.com | 🌐 www.krahejacorphomes.com | 📱 f in @

🏠 MAHARERA REGISTRATION NO.: P52100054218 AND P52100054163 | <https://maharera.mahaonline.gov.in>



Note - T2 named "Constella" and T3 named "Altair" of Raheja Galaxy in RV Premiere ("Project") is being developed by the Promoter- Cavalcade Properties Private Limited (a K. Raheja Corp group co.) and is registered with MahaRERA under Registration Nos.: P52100054218 and P52100054163 respectively, the details whereof are available on the website <https://maharera.mahaonline.gov.in/> under registered projects. The dimensions mentioned on the floor plans are as per the plans presently approved by the PMC (the Promoter reserves the right to vary the same in accordance with applicable laws, subject to final approval of the PMC). The furniture and features depicted on the typical floor plans (save and except fittings and features as may be agreed to be provided) are not part of the standard offering and are purely illustrative. List of standard offerings and other details are available for verification at site. Details of the specifications of the building/flats, standard offerings, amenities, and facilities are available at site for verification. Intending purchasers are requested to verify all details before acting in any manner with respect to the Project.